

EMBO WORKSHOP

10-12 September | 2007

Krakow | Poland

Epithelial- Mesenchymal Transition

SPEAKERS

Thomas Brabletz

Amparo Cano

Gerhard Christofori

Paolo Comoglio

Shoukat Dedhar

Carl-Henrik Heldin

Antonio García de Herreros

Caroline Hill

Raghu Kalluri

Michael Klymowsky

Lionel Larue

David McClay

Aristidis Moustakas

Donald Newgreen

Angela Nieto

Arne Östman

Raymond Runyan

Pierre Savagner

Jean-Paul Thiery

Erik Thomson

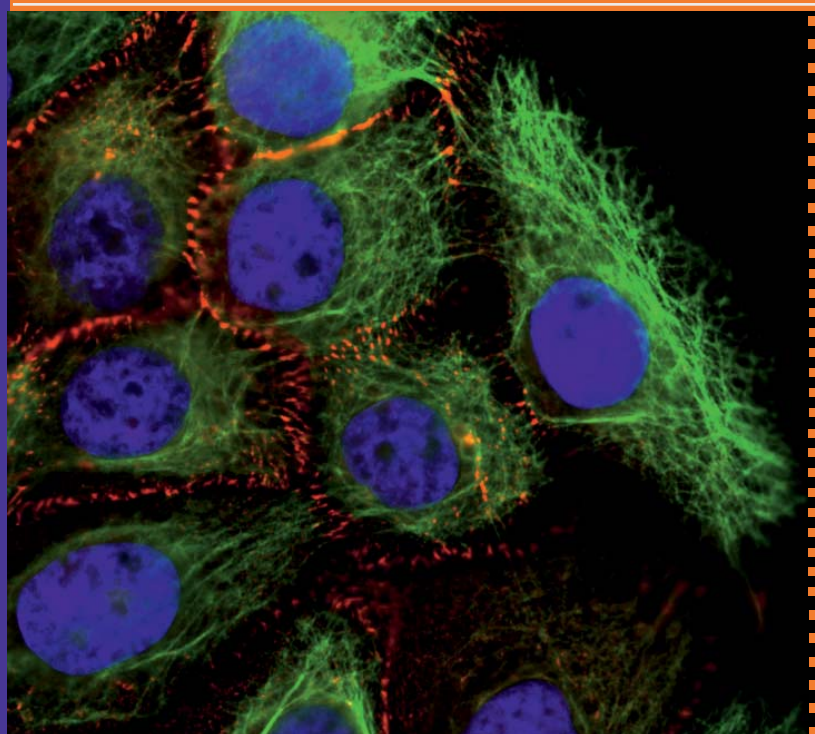
Avri Ben Ze'ev

3rd International Meeting

DEADLINE

July 30th, 2007

EMBO



» The concept of epithelial-mesenchymal (EMT) transition describes a fast and sometimes reversible modulation of cell phenotype occurring during development at key stages of embryogenesis. «

ORGANISERS

Pierre Savagner ■
BU868 INSERM
CRLC Val d'Aurelle
France
psavagner@valdorel.fnclcc.fr

Aristidis Moustakas ■
Ludwig Institute for Cancer Research
Sweden
Aris.Moustakas@LICR.uu.se

Amparo Cano ■
Universidad Autónoma de Madrid
Ciudad Universitaria de Cantoblanco
Spain
acano@iib.uam.es

Antonio García de Herreros ■
Unitat de Biologia Cel·lular i Molecular
Universitat Pompeu Fabra
Spain
Agarcia@imim.es

CO-SPONSORS

TEMTIA (The EMT international organization) ■
<http://www.mtci.com.au/temtia.html>
The EMT International Association, Inc

EpiPlastCarcinoma ■
<http://www.epiplastcarcinoma.org/>

EpiPlastCarcinom 

<http://cwp.embo.org/w07-41/>